

Keyboard

Play notes to be stored in the sequencer. These keys are like the black keys on a keyboard.

Play button

Press play to start the sequencer. It plays a loop of eight notes.

Sequencer

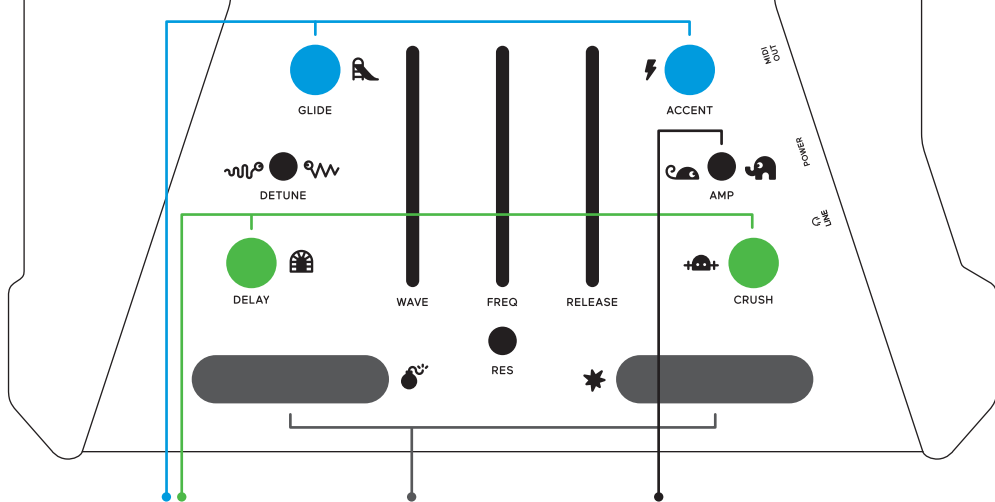
Press notes on the sequencer to turn them on or off.

Pitch arrows

Transpose up or down by one semitone at a time.

Effects

Jump to a random step or speed up the sequence. Press and hold these buttons.



Effects

Add various effects.
Press and hold
these buttons.

Finger drums

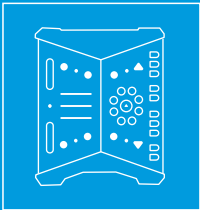
Drum on these
to add percussion.

Amp

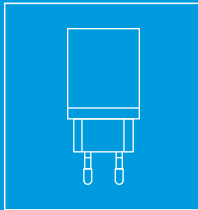
Adjust the volume.

This is the Dato DUO. This little machine was hand assembled for you in The Netherlands. The best way to find out how it works is to play with it – you can't do anything wrong!

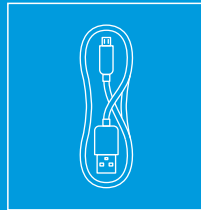
What's in the box



Dato DUO

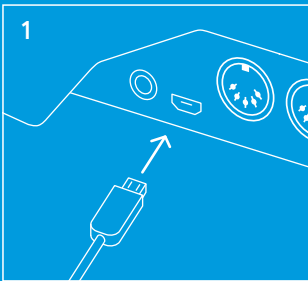


USB power adapter

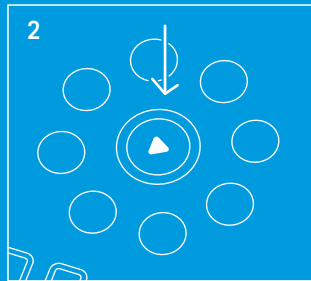


USB cable

Getting started

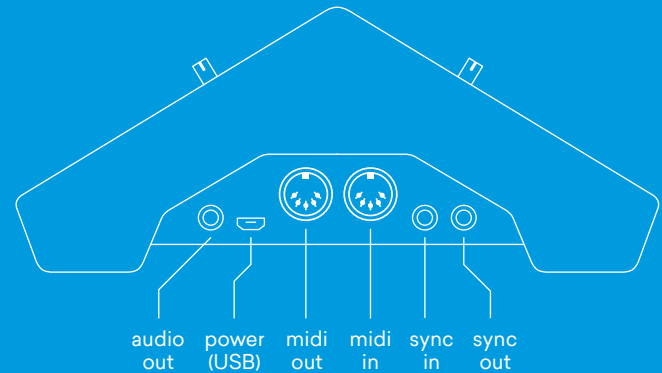


Plug in the USB power supply



Press play and jam together!

Inputs and outputs



Specifications

Dato DUO synthesizer/sequencer. 23 x 18 x 9 cm
Power supply 5V DC micro USB. 1A minimum
Sync: out: 3.3V pulse. In: 5Vpp max.

Contact

Dato Musical Instruments
Europalaan 2B F1.19
3526 KS Utrecht
The Netherlands

www.dato.mu
mail@dato.mu